



Mississippi Valley Chapter Newsletter

Sept 2010

<http://www.mississippivalleyashrae.org>

Monthly Newsletter

Important Dates

- Sept 16, 2010
John Deere Corporate Headquarters: East Office Remodel.
- Sept 23, 2010
Sporting Clays Outing at Bi-State Sportsman Association, 817 Cleveland Rd, Colona, IL
- October 21, 2010
Steeplegate Inn: Updates to ASHRAE 90.1-2010 presented by Jeff Boldt.

John Deere Corporate Headquarters: East Office Renovation.

Bruce Davis

Mr. Davis specializes in HVAC, Mechanical Piping, Plumbing, Indoor Air Quality, Dust Collection Systems, Building Air Balance Audits, and project management for John Deere. As Senior Engineer in the Facilities Engineering Division, his responsibilities include the design and installation of mechanical systems of all types for all Deere & Company operating units. He is responsible for providing technical assistance to any of the units in his area of expertise. Bruce holds a Master's of Science degree in Agricultural Engineering from Cornell University and a Master's of Science degree in Applied Science from Augustana College. Bruce served as the Mechanical lead engineer for the 2003 Deere & Company Moline Enterprise Support Facility and as a consultant for design and construction of mechanical and building control systems for new John Deere office buildings in Madison, WI, Raleigh-Cary, NC, and Pune, India.

Sept 16th Program

Location: John Deere Headquarters
Moline Technology Innovation Center (MTIC)
One John Deere Place
Moline, IL

Program: Retrofit Deere East Office Dual Duct System to VAV Dual Fan System

Agenda: 4:30-4:35 Park/begin presentation
5:10-5:45 Walk to East Office/tour
6:00-6:15 Chapter Meeting at Ryan's Steakhouse
7:00-7:15 Dinner at Ryan's Steakhouse

Menu: Buffet Dinner at Ryan's
3710 39th Ave Dr
Moline, IL

Technical Topic Outline

The East Office HVAC remodel project consisted of design and bid of the East Office HVAC Penthouse system retrofit from DDCV single fan to DD-VAV dual fan, involving 8 fans with over 1000 total horsepower and 264,000 cfm maximum airflow. This beautiful and historic office building was built with the best technology of its time in 1963, and after 48 years the HVAC system was retrofit with an expected ROI of 29%. This presentation will review how the project concept was discovered and developed. Refer to the flyer near the end of the newsletter for a map of the meeting and dinner locations.



Mississippi Valley Chapter Newsletter

Sept 2010

<http://www.mississippivalleyashrae.org>

Monthly Newsletter

Mississippi Valley Chapter News

Sporting Clays Outing

The First ever Mississippi Valley Chapter Sporting Clays fundraiser will be held on September 23, 2010 at Bi-State Sportsman Association, located at 817 Cleveland Road, Colona, IL. The registration deadline is Sept 3, 2010, so if you haven't already registered get your forms turned in to Tim Wray via email (wraytc@kjww.com) or fax (309-786-5967). Funds received from this event will support the ASHRAE Scholarship fund. The registration form for this event is attached to this newsletter, and only the first 100 registered individuals are guaranteed to shoot so get your registration forms in today! Note the start time has been change from 3:00p.m. to 3:30p.m.

New Mississippi Valley Chapter Officers

As we welcome in a new year of ASHRAE activities, we have several new faces in the Mississippi Valley Chapter Board of Governors. Philip Prest will be joining the BOG as the second at-large member and Kyle Rehn joins as the Student Activities Chairperson. Welcome Philip and Kyle!

ASHRAE News

ASHRAE Encourages States to Meet Current Building Energy Codes

ATLANTA – As the developer of the nation's first standard for energy efficiency in buildings, ASHRAE applauds a recent announcement by the U.S. Department of Energy regarding funding to states to implement the most current energy codes.

This week, the U.S. Department of Energy (DOE) announced it is seeking proposals to support activities related to the adoption and implementation of the most current building energy codes. Proposals must address activities to adopt the target codes, which includes ANSI/ASHRAE/IESNA Standard 90.1-2007, Energy Standard for Buildings Except Low-Rise Residential Buildings, training activities or activities that advance the state's level of compliance with state building codes. States are allowed to partner with technical and other organizations, such as ASHRAE, and consultants in their proposals.

<http://www.ashrae.org/pressroom/detail/17602>

ASHRAE, NEMA Partner on Standard to Create Facility Smart Grid Model

ATLANTA – We may not be traveling in flying cars or have talking robot maids as shown in the television cartoon "The Jetsons," but homes, commercial and institutional buildings and industrial facilities are about to get a lot "smarter" when it comes to electrical use.

<http://www.ashrae.org/pressroom/detail/17601>

Standard 90.1 Featured in ASHRAE Fall Educational Courses

ATLANTA – Two new courses related to Standard 90.1 are part of the 12 online professional development courses being offered this fall by ASHRAE through the ASHRAE Learning Institute (ALI). ALI courses provide professional development through in-depth information that is timely, practical and advanced beyond a fundamental level. The online courses allow attendees to log in to learn from anywhere with an Internet connection. Course participants earn three professional development hours, .3 continuing education units, or three American Institute of Architects learning units for each seminar completed. Courses are instructor-led, drawing upon professional knowledge of leading practitioners.

<http://www.ashrae.org/pressroom/detail/17588>

ASHRAE Vice President Testifies at DOE Hearing on Sustainable Design Standards

ATLANTA – A newly published high-performance green standard would provide a solid foundation on which the federal government could build its efforts to make its buildings more sustainable, according to testimony today from ASHRAE.

The U.S. Department of Energy held a hearing Wednesday, July 27, on the notice of proposed rulemaking on energy efficiency and sustainable design standards for new federal buildings and major renovations of federal buildings.

<http://www.ashrae.org/pressroom/detail/17586>

Digital Journal

http://www.nxtbook.com/nxtbooks/ashrae/ashraejournal_201008/#/0

Industry News

Renewable Energy Benefits From Recovery Act Funding, Says Report

WASHINGTON—Renewable energy generation in the United States has benefited greatly from the federal stimulus bill's \$100 billion investment in energy innovation, according to a report released this week by U.S. Vice President Joe Biden. According to "The Recovery Act: Transforming the American Economy Through Innovation," the United States is now on track to achieve three major breakthroughs due to Recovery Act investments: cutting the cost of solar power in half by 2015; reducing the cost of batteries for electric vehicles by 70% between 2009 and 2015; and doubling U.S. renewable energy generation and renewable manufacturing capacity by 2012.

http://www.whitehouse.gov/sites/default/files/uploads/Recovery_Act_Innovation.pdf

130 Seek Care After Alabama Ammonia Leak

THEODORE, Ala.—Several people remain in intensive care a day after an ammonia leak at a coastal Alabama plant that freezes chickens. About 130 people have sought treatment since ammonia spilled Monday at the suburban Mobile plant, creating a vapor cloud that also caused respiratory problems for people working nearby. Ammonia is a suffocating gas that can be fatal in high concentrations.

<http://www.google.com/hostednews/ap/article/ALeqM5gJOLhi8d8b376OYsNwe7wEHAhtGAD9HO8FR00>

Oregon Office Building Declared Structurally Unsound

SALEM, Ore.—The Courthouse Square building and transit mall in Oregon's capital has been declared structurally unsound. The city recently ordered the facility's owners and occupants, Marion County and the Salem Area Mass Transit District, to vacate the building and repair several issues in the building or demolish it. The 163,000 ft² (15 100 m²) project was completed in 2001. Problems include broken concrete in support columns, bent window frames that cracked windows, and cracks in walls. The building was certified LEED Bronze in Version 1 of the USGBC program in 2002.

<http://www.statesmanjournal.com/apps/pbcs.dll/article?AID=/99999999/NEWS/307270004&theme=SQUARE&template=theme>

Check-out the Updated Chapter
Website at:

www.mississippivalleyashrae.org

2010-2011 Officers/Board of Governors

President:	Simon Possin
Vice President:	Jake Vorac
Treasurer:	Nate Jacques
Secretary:	Cris Washburn
Past President	Patrick Igou
Member at Large:	Philip Prest
Member at Large:	Brian Hodgkin

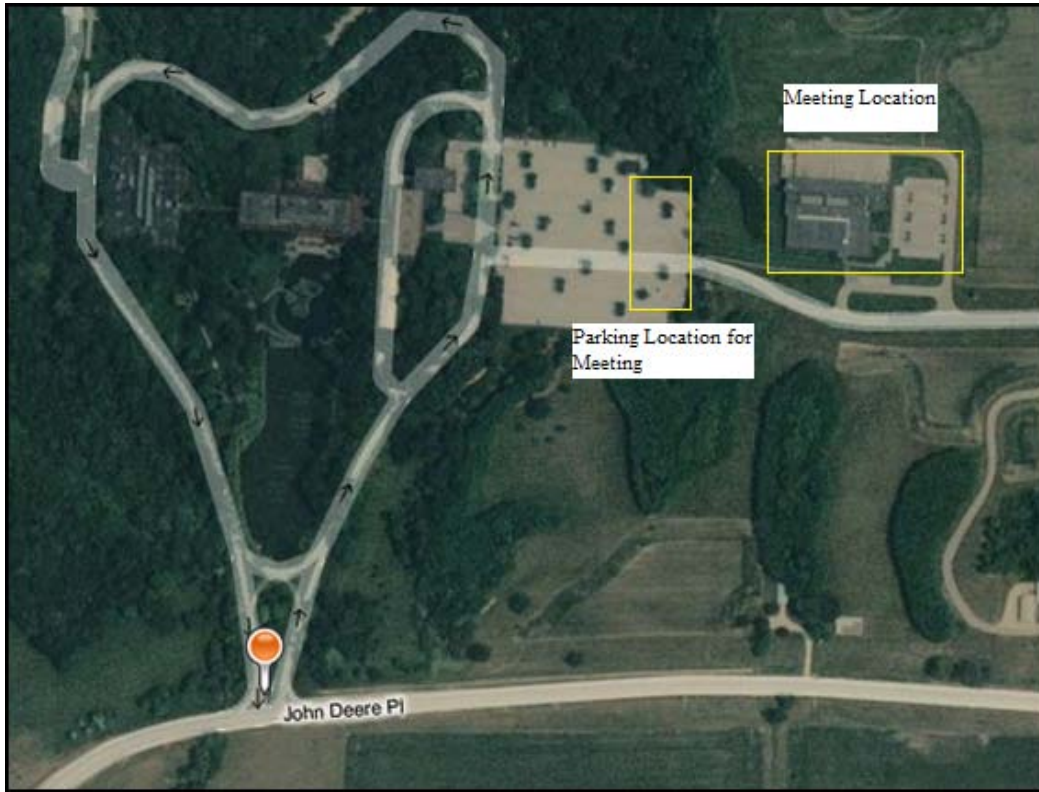
2010-2011 Committee Chairs

CRC Delegate:	Jake Vorac
CRC Alternate:	Nate Jacques
Historian:	Sherm Sweeney
Membership:	Tracy VanDamme
Programs:	Jake Vorac
Resource Promotion:	Patrick Igou
Seminar:	Bruce Davis
Student Activities:	Kyle Rehn
CTTC:	Bruce Davis
Webmaster:	John Schaub



Mississippi Valley Chapter
ASHRAE
Attention: Cris Washburn
P.O. Box 5028
Davenport, IA 52808

September ASHRAE Meeting Location



Meeting attendees should park at the east end of the main parking lot and walk to the Moline Technology and Innovation Center (MTIC) for the presentation and tour. Following the meeting, dinner and the chapter meeting will take place at Ryan's Steakhouse, 3710 39th ave dr, Moline, IL. Map of the dinner location is shown below.



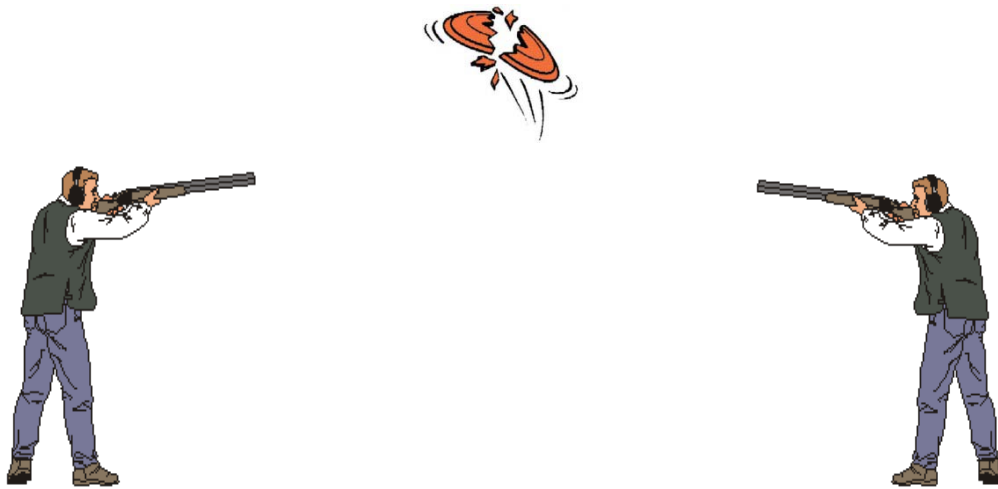
See you all on September 16th for the meeting and tour!



Attention ASHRAE Members!!!
First Annual ASHRAE Sporting Clays Outing

Dear Friend of ASHRAE,

The first annual ASHRAE sporting clays outing will be held at Bi-State Sportsman's Association near Colona, Illinois on Thursday, September 23, 2010. The purpose of this outing is to relax and have fun while raising money for ASHRAE Student Activities. We will have dinner and drinks at the club for each shooter after the event. To assist in the Research Fund Raising, we have individual shooter & squad sponsors (squad of 5). Please note - if you have a friend or acquaintance that would like to participate or donate, invite them as well! A sign will be located at the course indicating squad sponsors. To guarantee that we can get your name and logo on the sign we must have all logos by September 3, 2010.



To aid in Student Activities fund raising we will offer a 50/50 competition for the 10 station, 100 clay event and a separate 50/50 Skeet Competition after the main event. The winner of each competition will take one half of the pot and the other half will go to the Mississippi Valley Chapter of ASHRAE to support scholarships and other student activities.

The cost for individual shooters is \$50 which includes course fees, clays, trapper fees, and dinner. The cost for a Squad Sponsor is \$300. This includes shooter and sponsor recognition and dinners. Any donations above the \$300 fee will go towards ASHRAE Student Activities.

The setup of this sporting clays outing has a capacity of 100 shooters. We will accept the first 100 paid shooters so get the entry forms and money in early to guarantee your spot now.

If interested, please call (309)-788-0673 or send a check, made out to ASHRAE to myself at KJWW Engineering. Entries are due no later than Friday, September 3, 2010. Let's make this a great outing!

Thank you for your support,

Tim C. Wray, Sporting Clays Chairman
wraytc@kjww.com

Simon Possin, Sporting Clays Co-Chair
possinsp@kjww.com

ASHRAE SPORTING CLAYS

WHAT: First Annual ASHRAE Sporting Clays to Support ASHRAE Student Activities

WHO: ASHRAE Members and Friends

WHEN: **Thursday, September 23, 2010 @ 2:00 PM**

WHERE: Bi-State Sportsman's Association (SIGNS WILL BE POSTED ALONG CLEVELAND ROAD)
571 Cleveland Road, Colona, IL

Bring:

- Shotgun
- Min. 100 shells - #7 1/2 or #8 shot (shells are available at the club at club pricing)
- Something to carry your shells in (backpacks work well)
- Eye protection
- Ear protection
- Comfortable clothing and shoes (it is about 1/2 mile around the course)

TIME: Sporting Clays - Shotgun Start at 3:30 p.m. **(THIS MEANS WE ARE ON THE COURSE AT 3:30!) BE AT THE COURSE BY 2:30 TO GET CHECKED IN, TEAM AND STATION ASSIGNMENTS)**

Sign-In - 2:30 p.m.
Course Information - 3:00 p.m.
Shotgun Start - 3:30 p.m.
Dinner and Skeet to Follow

COST:

Individual Sporting Clays and Dinner	\$ 50.00
Squad Sponsor *	\$ 300.00
Clays Competition (optional @ the course)	\$ 10.00
Skeet Competition (optional @ the course)	\$ 10.00

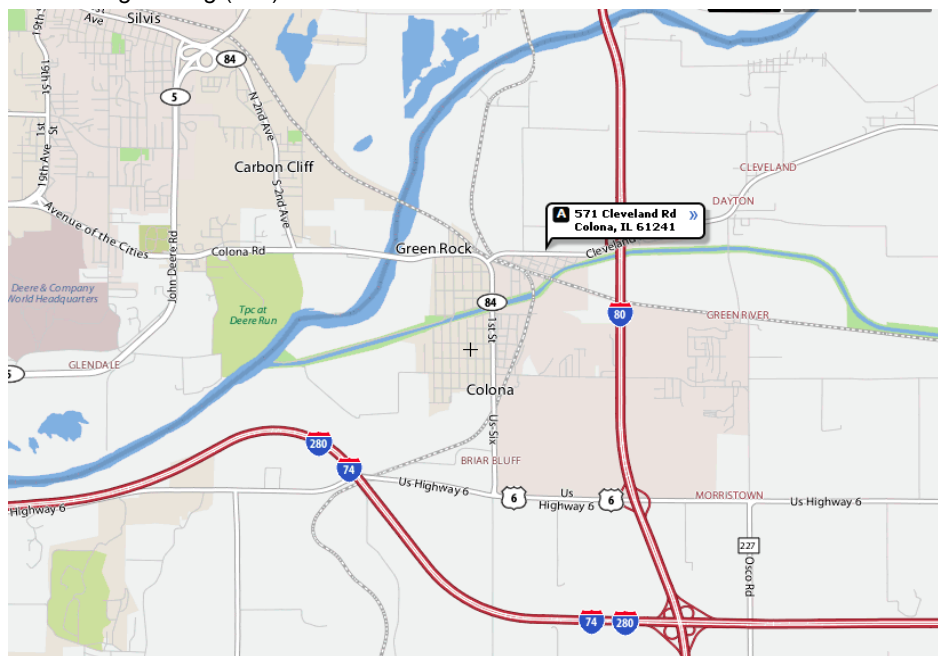
* Includes Course Fees, Clays, Trapper Fees and Dinner.

For more information contact Simon Possin or Tim Wray at KJWW Engineering.

ALL FEES DUE WITH REGISTRATION FORM BY FRIDAY, September 3, 2010.

QUESTIONS: Contact the ASHRAE Sporting Clays Committee:
Simon Possin: email - possinsp@kjww.com
Tim Wray: email - wraytc@kjww.com
KJWW Engineering (309) 788-0673

MAP:



ASHRAE SPORTING CLAYS

REGISTRATION FORM

First Annual ASHRAE Student Activities Sporting Clays and Cookout
Door Prizes and Two 50/50 Shooting Tournaments - Winner Takes Half!
ASHRAE Student Activities benefits from the other half.

Contact Name: _____ e-mail: _____

Phone: _____

Guest: _____ e-mail: _____

Guest: _____ e-mail: _____

Guest: _____ e-mail: _____

Guest: _____ e-mail: _____

SEPTEMBER 23, 2010 STARTING AT 2:30 PM

We will assign you to a team if not indicated above. Outing will be a shotgun start (literally).
Starting station will be assigned to your group at the club.

Support ASHRAE Student Activities and Scholarships!!

ALL MONEY FOR REGISTRATION IS DUE BEFORE SEPTEMBER 1, 2010!!!
(THIS HELPS THE CLUB SCHEDULE TRAPPERS)

HURRY! ONLY THE FIRST 100 PAID SHOOTERS ARE GUARANTEED TO SHOOT!!!

Burgers, Brats and Beverages Provided!!!!

RETURN THIS FORM BY SEPTEMBER 3, 2010 WITH YOUR CHECK PAYABLE TO

ASHRAE: Simon Possin
KJWW Engineering • 623 26th Avenue • Rock Island, Illinois 61201
Phone: (309) 788-0673 • Fax: (309) 786-5967

Squad Sponsor _____ TOTAL NO. @ \$ 300.00 EA = _____

(Squad of 5)

Individual Shooter _____ TOTAL NO. @ \$ 50.00 EA = _____

TOTAL AMOUNT DUE = _____
WITH THIS FORM